



935 W. CHESTNUT ST SUITE 206
CHICAGO, IL 60642

(312) 761-8174 | www.seek.design

THE MACHINE SHOP NORTH

2145 W GRAND AVE
CHICAGO, ILLINOIS 60612

CLIENT
MANNA CAPITAL PARTNERS
2415 W 19TH ST SUITE 2M
CHICAGO, IL 60608

CIVIL ENGINEER
GLOGER ENGINEERS LTD.
6512 N. MOZART ST SUITE 2E
CHICAGO, IL 60645
773.338.0312

STRUCTURAL ENGINEER
FOREFRONT STRUCTURAL ENGINEERS
25 E WASHINGTON ST SUITE 1450
CHICAGO, IL 60602
312.376.1140

MEP / FP ENGINEER
MINTROPY
321 N. CLARK ST SUITE 500
CHICAGO, IL 60654
312.210.0765

2 LANDSCAPE / ZONING 03.13.2023
REVISIONS 2
PERMIT REVISIONS 2 02.02.2023
ZONING REVISIONS 2 01.19.2023
ZONING REVISIONS 1 12.19.2022
ISSUED FOR PERMIT 08.30.2022

NO.	DESCRIPTION	DATE
-----	-------------	------

FOR REVIEW ONLY
09.08.2023

FLOOR PLANS

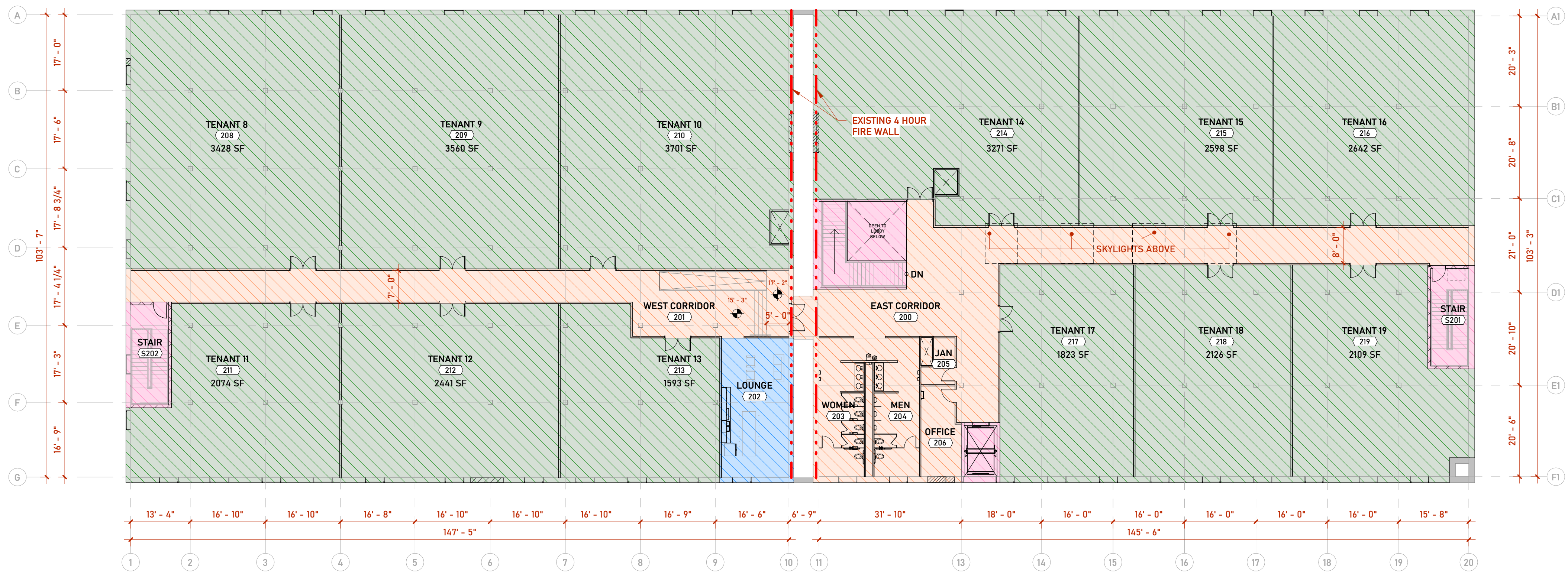
A1.0

SEEK PROJECT NO. 21125

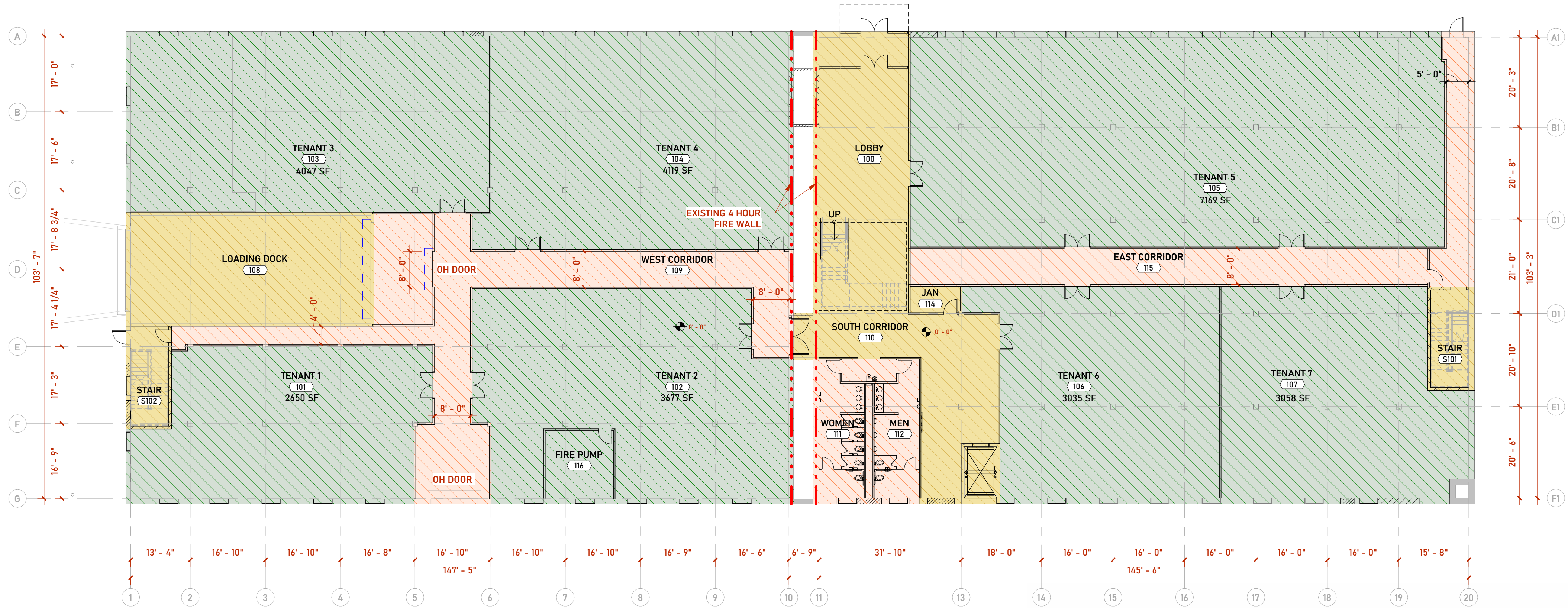
FLOOR PLAN LEGEND

- EXISTING PARTITION
- BRICK WALL INFILL
- NEW PARTITION
- NEW ELEMENT
- EXISTING ELEMENT
- ELEMENT ABOVE
- AREA OF FLOOR INFILL

- TENANT SPACE - 48,336 SF
- BUILDING SERVICE AREA - 4,406 SF
- BUILDING AMENITY AREA - 538 SF
- FLOOR SERVICE AREA - 8,736 SF
- MAJOR VERTICAL PENETRATIONS



2 SECOND FLOOR PLAN
1/8" = 1'-0"



1 FIRST FLOOR PLAN
1/8" = 1'-0"

FLOOR LEVEL	BOUNDARY AREA*	RENTABLE EXCLUSIONS	SINGLE OCCUPANT RENTABLE AREA	RENTABLE EXCLUSIONS 2	SPACE ID	OCCUPANT AREA	BUILDING AMENITY AREA	FLOOR USABLE AREA	BUILDING SERVICE AREA	FLOOR SERVICE AREA	FLOOR ALLOCATION RATIO	FLOOR ALLOCATION	BUILDING AMENITY & SERVICE AREA	BUILDING ALLOCATION RATIO	MULTI-OCCUPANT RENTABLE AREA	LOAD FACTOR
FIRST FLOOR					TENANT SPACE (E)	10,736	-	10,736	2,751	2,221	1.18	12,668	2,751	1.09	13,763	1.28
					TENANT SPACE (W)	12,073	-	12,073	1,655	2,115	1.18	14,246	1,655	1.09	15,478	1.28
		418			FIREWALL AREA											
FLOOR TOTALS	31,714		31,714			22,809	-	22,809	4,406	4,499	1.01	27,184	4,406		29,241	
SECOND FLOOR					TENANT SPACE (E)	11,911	-	11,911	-	3,013	1.19	14,174	-	1.09	15,399	1.29
					TENANT SPACE (W)	13,616	538	14,154	-	1,447	1.19	16,203	640	1.09	17,604	1.29
		418			FIREWALL AREA											
FLOOR TOTALS	31,714		31,714			25,527	538	26,065	-	5,649	1.01	30,681	640		33,003	
BUILDING TOTALS	63,428		63,428			48,336	538	48,874	4,406	10,148		57,865	5,046		62,244	

* FROM SURVEY

